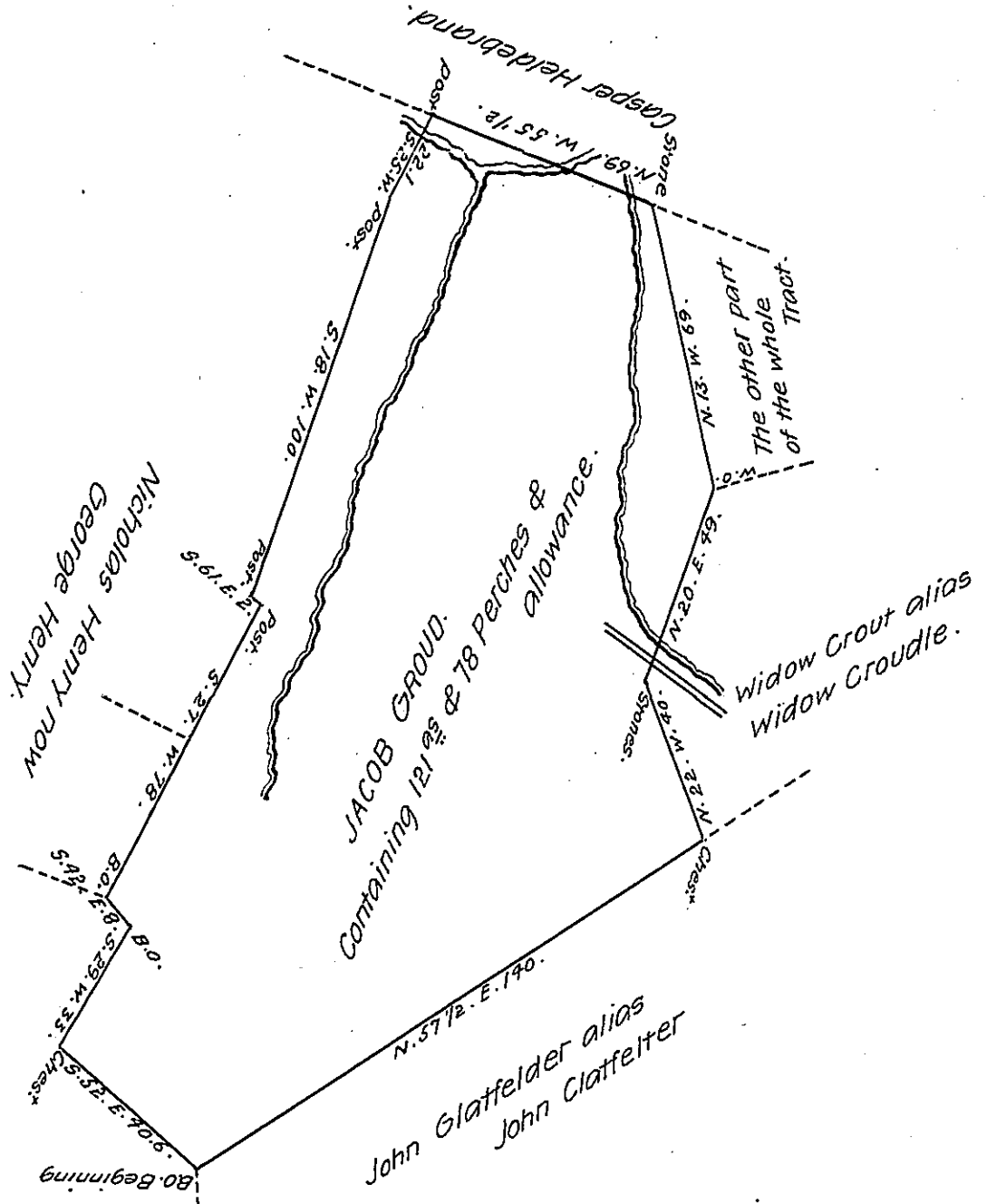


FORM NO. 1.



Situate in Shrewsbury Township in the County of York Containing as above set forth 121 ³/₄ & 78 Perches & allowance Being part of a larger Tract of 126 ³/₄ ⁹/₁₆ and allowance, which was Originally Surveyed by William Kersey late D.S. on the 25th of the 11th mo 1789 for Jacob Croud, in pursuance of a Warrant dated the 11th Day of June 1789. And afterwards to-wit on the 20th of the 4th mo 1793 divided off from the Said larger Tract of Land by the said William Kersey late D.S. And now at the Request of the said Jacob Croud, I am desired to make Return of the Draught, as calculated examined and Corrected the 26th day of August Anno Domini 1809.

Per Jacob Spangler D.S.

To Andrew Porter Esq:
 Surveyor Gen:
 Lancaster Pa

IN TESTIMONY that the above is a copy of the original remaining on file in the Department of Internal Affairs of Pennsylvania, made conformably to an Act of Assembly approved the 16th day of February 1833, I have hereunto set my hand and caused the Seal of said Department to be affixed at Harrisburg, this nineteenth..... day of June..... 1907.

Henry Houck
 Secretary of Internal Affairs.